

Wheat- The Journey from Paddock to Plate.



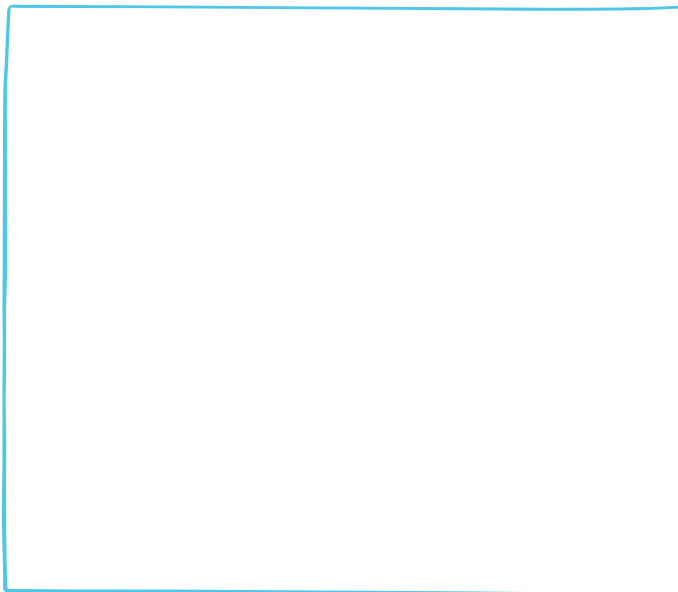
Farmers sow wheat seeds then monitor and care for the growing plants by making sure they have plenty of sunshine, water and fertiliser.



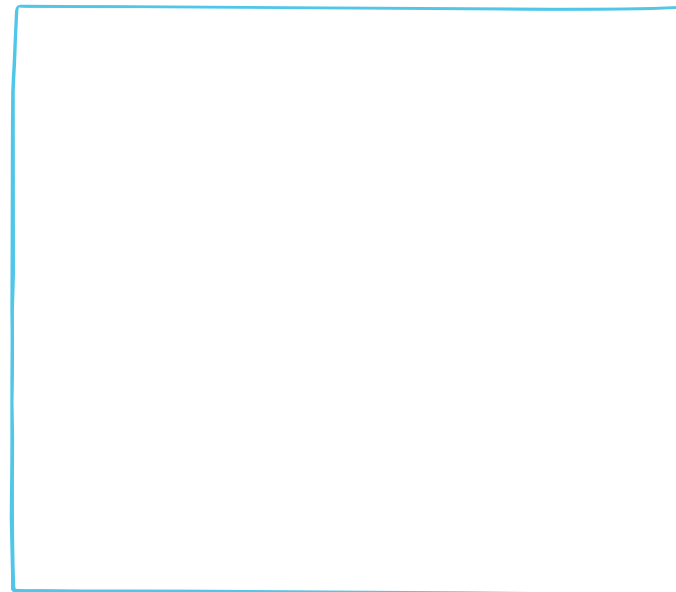
The grain of the wheat is harvested in summer using special machines called 'headers' or harvesters!



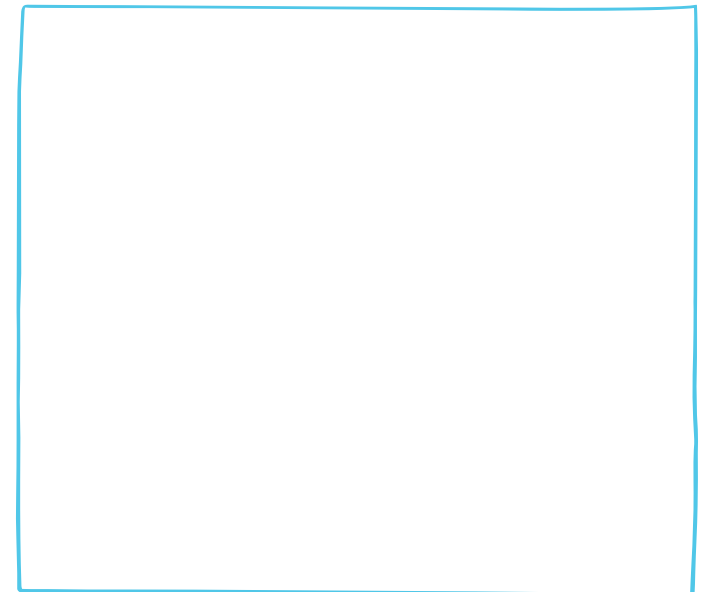
The grain is stored in large silos where it is dried out.



After drying, the grain is ground into flour using steel rollers or stones.



The flour is packaged and sold to supermarkets and bakeries.



The flour is used to make bread, pasta, cakes and other delicious foods..